



Xc 45

40TH ANNIVERSARY
EDITION 1979-2019

“Luxury is in each detail”
Hubert de Givenchy



The Xc 45 was launched in 2008 as the first of a new breed of cruising orientated X-Yachts. The Xc 45 won the prestigious title of “European Yacht of the Year 2009” in the “Luxury Cruiser” category, and it keeps on winning; crowned ‘Best Performance Cruiser’ by Sailing Today in 2015, nominated for ‘Best Worldwide Production Sailing Yacht under 15 metres’ at the Asia Boating Awards and winning ‘Best Full-Size Cruiser Under 50-feet’ at the Cruising World Boat of the Year Awards in 2016.

Following extensive feedback from a large group of Xc owners, as well as our own experience over the last 10 years, 2019 will see the launch of the ‘X-Yachts 40 Years Anniversary’ edition of the Xc 45.

The ‘Anniversary’ edition of the Xc 45 builds upon the success of the Xcruising range with an updated specification implementing improvements from feedback gathered from a fleet of over 300 Xc yachts worldwide.

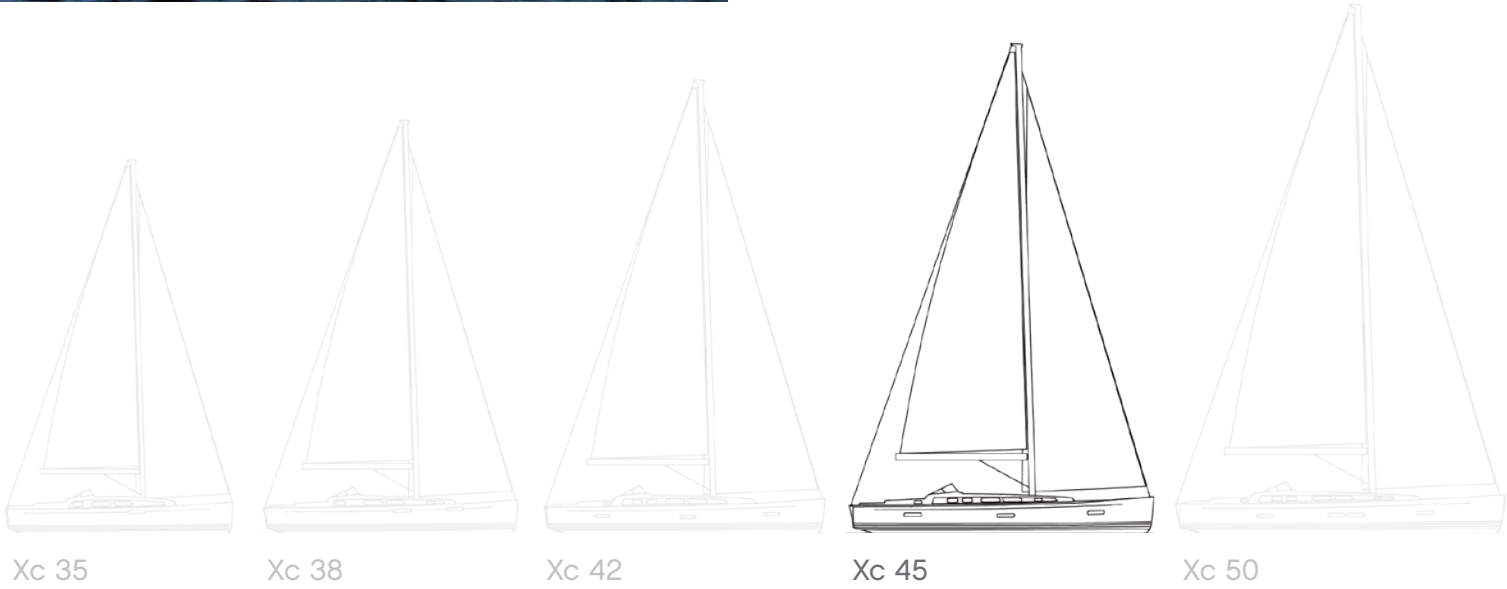
From this edition of the Xc 45 and onwards, the Xc models are built using epoxy infusion in the hull. X-Yachts hulls are post-cured or “oven-baked” to improve structural properties of the composite. Epoxy resin has higher mechanical and thermal stability than traditional polyester resins.


Exterior upgrades include new optional jib self-tacker design, composite bowsprit and new colourways.

Interior upgrades include Nordic oak furniture, new bathrooms, updated owner’s cabin and new interior fittings throughout.

Systems upgrade highlights include new tank displays showing remaining volume in litres and upgraded ambient lighting.

The Xc 45 was praised for her combination of cruising comfort, performance under sail and responsive handling at the European Yacht of the Year Awards.



A sailboat with a large black sail is sailing on the ocean. The boat has a white hull and a wooden deck. Several people are visible on the deck. The sail is a large, dark, textured material. The boat is moving through the water, creating a wake. The sky is clear and blue.

“If you thought this was just going to be another X-Yachts branded performance cruiser, think again!

Toby Hodges, Yachting World, Great Britain

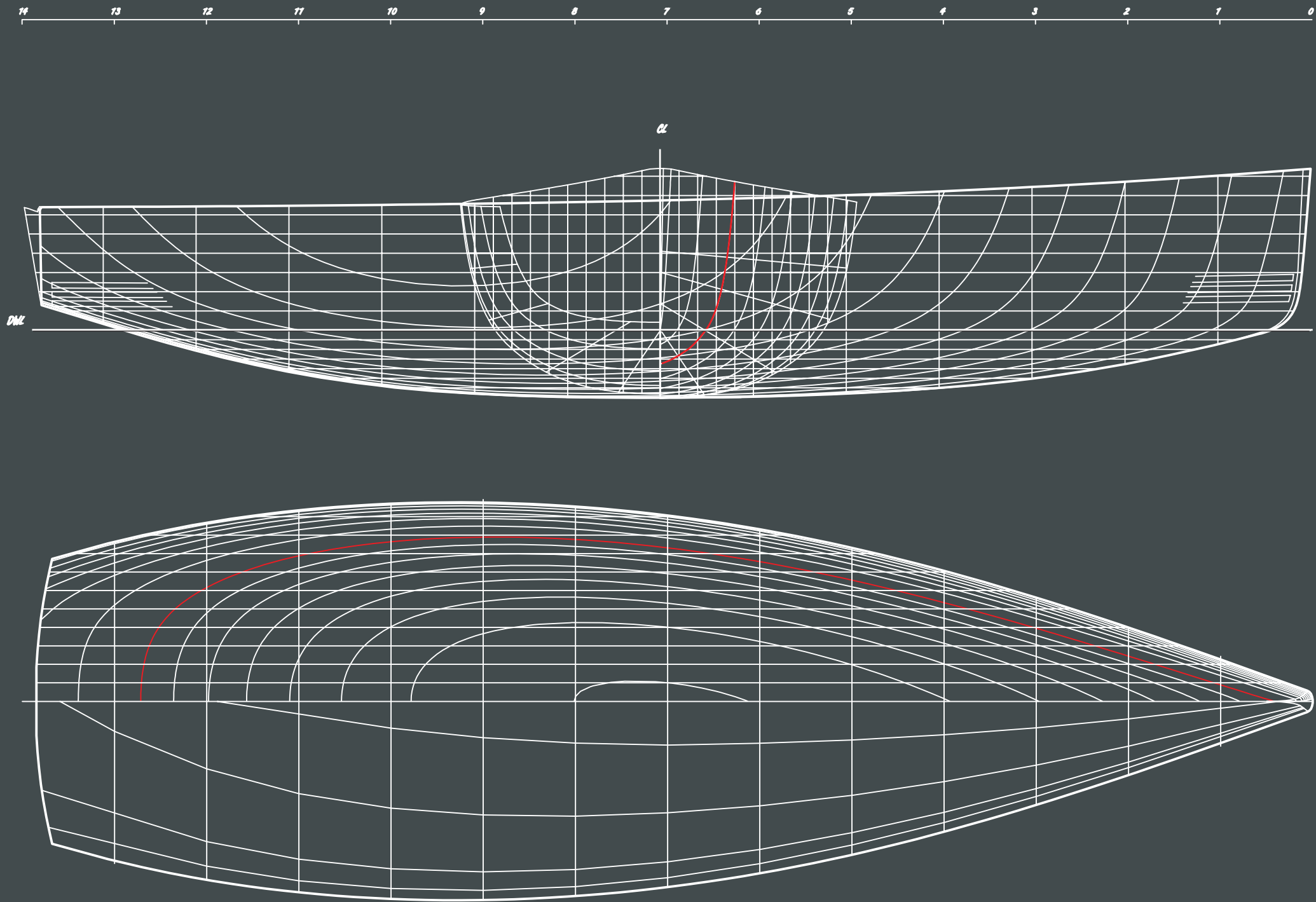
DESIGNER'S COMMENTS

One of the main differences between the Xperformance and Xcruising ranges is the hull design. The Xc range, with its deeper hull sections, provides a greater interior volume for tanks and other essential cruising equipment. Deeper V-shaped forward hull sections ensure a smooth and comfortable motion when the yacht is sailed into waves (either under sail or engine).

The greater displacement allows for a heavier keel to be fitted. The large fuel and freshwater tanks and the heavy battery bank are all strategically located low and central in the yacht for excellent weight distribution. It also enables the Xc 45 to carry the perhaps most important and remarkable X-Yachts quality feature, the galvanized steel hul-keel girder frame. X-Yachts introduced this design feature back in 1981 and is your gurarantee that the keel attachment is done in the safest way possible. Lowering the centre of gravity optimises the stability and allows for a well proportioned sail plan. The Xc 45 can make short work of any long passage.

The composite lead/cast iron keel is encapsulated in a reinforced epoxy e-glass shell to guarantee a perfect keel section and avoid corrosion. Flush mounted skin fittings and a folding propeller reduce drag, ensuring the Xc 45 can make the most of the conditions.


Niels Jeppesen
Design Director



Copyright X-Yachts <small>WORLD CLASS SINCE 1979</small>	Yacht Xc 45	Designed by X-Yachts Design Group	Principal Dimensions Hull length: 13.86 m - 45.47 ft Beam: 4.32 m - 14.17 ft Draft: 2.20 m - 7.21 ft Displ.: 13,220 kg - 29,145 lbs
	Drawing Lines Plan		
	Date 2018		

The model to starboard displays standard options with optional teak laid side decks, whilst the model to port shows optional toughened glass windshield and optional cockpit bimini and optional Flexiteek on coach roof and side decks. The standard cockpit & bathing platform teak is upgraded to Flexiteek when either of these options is chosen.

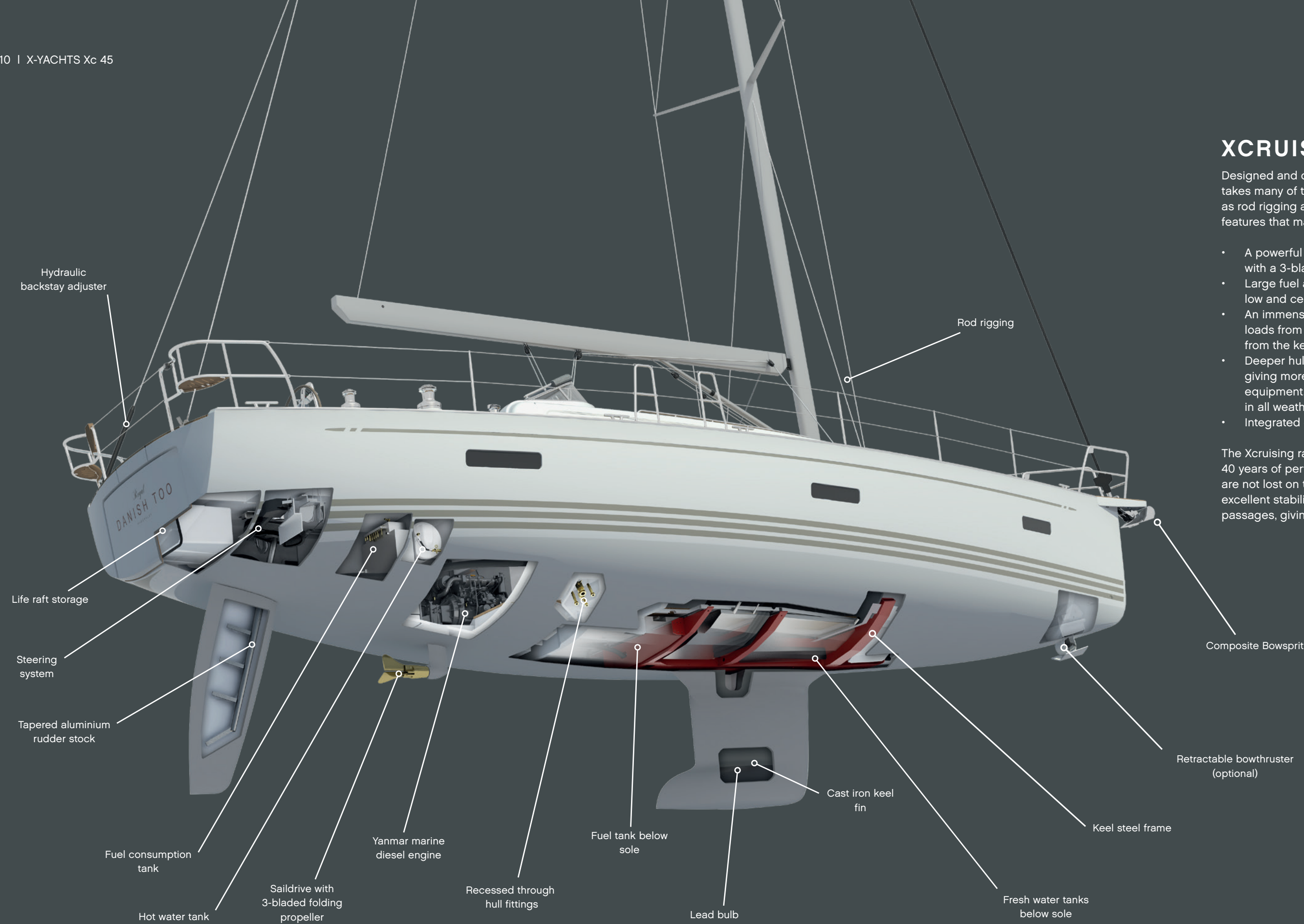


XCRUISING QUALITIES

Designed and developed for long-distance cruising, the Xc 45 takes many of the qualities of the performance X-Yachts such as rod rigging and fully encapsulated keels, but also has many features that make it ideal for offshore passage making:

- A powerful engine in a well sound insulated compartment, with a 3-bladed folding propeller
- Large fuel and fresh water tanks, all strategically located low and central in the yacht for optimum weight distribution
- An immensely strong steel hull girder frame, taking the loads from the composite lead/cast iron keel as well as from the keel stepped mast
- Deeper hull sections provide a greater interior volume, giving more storage and space for essential cruising equipment, a feature which also provides smoother sailing in all weathers.
- Integrated composite bowsprit.

The Xcruising range is more than having great cruising qualities, 40 years of performance yacht experience and racing heritage are not lost on the Xc 45. A flexible yet powerful sail plan, excellent stability and easy handling make short work of long passages, giving you more time to explore.



“Nothing can substitute
experience

Paolo Coelho



OWNERS’ COMMENTS

TWO OF OUR OWNERS DESCRIBE THEIR XC 45 EXPERIENCES...

DAVE & DEE KEAVY, AUSTRALIA

“Five years ago we began our love affair with our Xc 45 ‘Solero’. We picked her up from the factory and spent two wonderful seasons cruising around Denmark, Sweden, Finland and Norway. Seeing places and sailing in conditions so different to our native Australia. This included a trip of a life time through the Göta and Trollhättan canals from the east to the west coast of Sweden.

But the Mediterranean was always our goal and with the assistance of the factory we had her put on a truck and sent to Koper in Slovenia. We are now in our third year in the Med sailing down through Croatia, Montenegro, Albania and now in Greece.

What we love about our yacht is not only that she is fast, but when we’ve been caught out by the weather from squalls in Denmark to the Bura in Croatia, we know she is built to take it. Her big fuel and water tanks make life so easy and she’s easily handled by the two of us.

Along the way we’ve made great friends with many other cruisers and what has surprised us is how many of them have changed yachts, unhappy with their original choice. After five years we’d still get an Xc 45.”



These descriptions, illustrations and dimensions are not contractual binding.

Dave and Dee Keavy, Solero



John and Aafke Oldridge Perseverance

JOHN & AAFKE OLDRIDGE, ENGLAND

John has been sailing for over 60 years. The last two boats he owned with his wife Aafke were Swans. They began the search for their next yacht in which they wanted to cruise short handed with good performance and comfort.

Comfort down below is first-class, with a cool modern interior that will not date, yet retains a traditional feel.

All in all, the Xc 45 is an impressive package, with excellent performance, good manners and first-class accommodation, all built to a high standard. She makes an outstanding fast cruising boat.”

“I wanted a boat that was fast, comfortable and sea-kindly, and the Xc 45 has not disappointed. The extra displacement and depth to the hull gives an exceptionally easy motion in a sea-way, while her high ballast-ratio and tall sophisticated rig with rod-rigging and hydraulics as standard, ensure sparkling performance that will satisfy owners who are more used to racing yachts. The combination of a large mainsail and non-overlapping jib makes her easy to handle short-handed, (we usually sail just the two of us), and in harbour, the powerful bow-thruster and big rudder make docking simple.

Under engine, she will cruise at 8 knots, with power delivered smoothly, quietly and economically, and with a large fuel tank, the range is impressive.



FIND OUT MORE AT [X-YACHTS.COM](https://www.x-yachts.com)



DECK LAYOUT

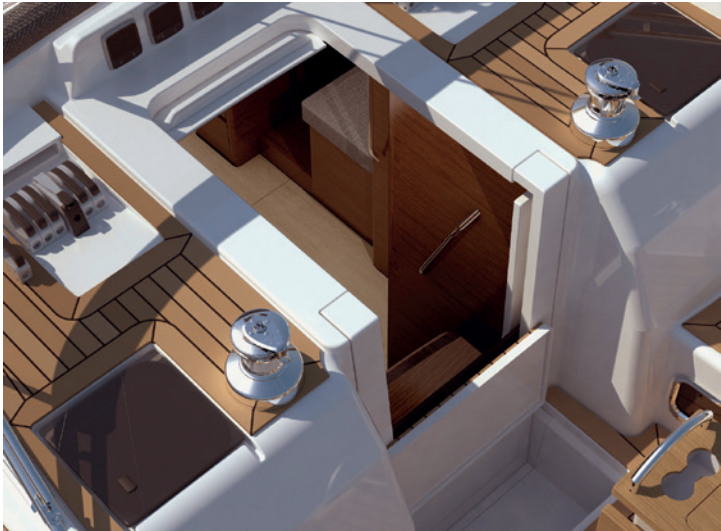
Both boats shown with optional sidedeck teak. Boat to port is shown with Flexiteek upgrade with optional coachroof 'teak' and fixed windscreen.

DECK DETAILS



The liferaft is stored below the cockpit floor. The bathing platform is electrically operated, but can also be opened mechanically in emergency.

Xc 45 shown with optional teak laid decks on top of coachroof and side decks, optional windshield and optional integrated jib self-tacker.



All halyards pass below the deck surface and are stored in the cockpit floor self draining "bin". Self-draining, acrylic dropboard is supported by gas struts for easy adjustment.



Folding teak cockpit table with GRP instrument support, designed to fit a chart plotter and autopilot instruments. Storage in centre of table. Optional grabrail on forward end.



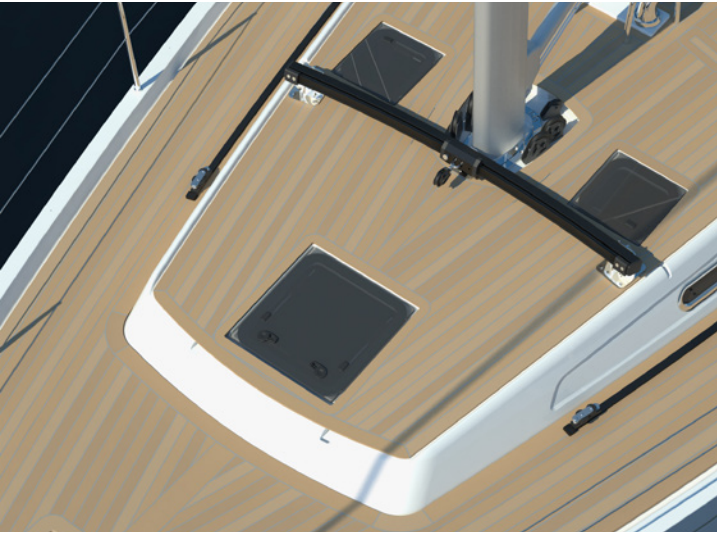
Stainless steel self-tailing Andersen Winches, which can be upgraded to be electrical powered, are part of Xc 45's comprehensive standard quality.



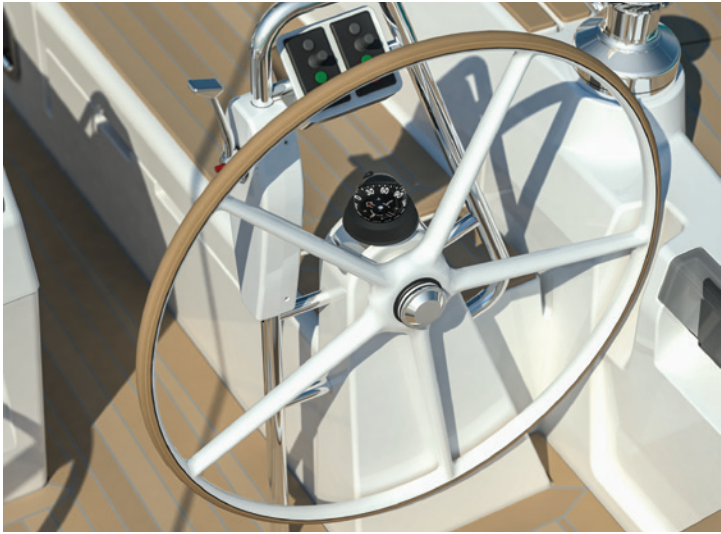
In the foredeck a deep sail locker, with integrated self draining anchor chain compartment. The electrical anchor winch capstan can be fitted with an optional topwinch to operate moorings.



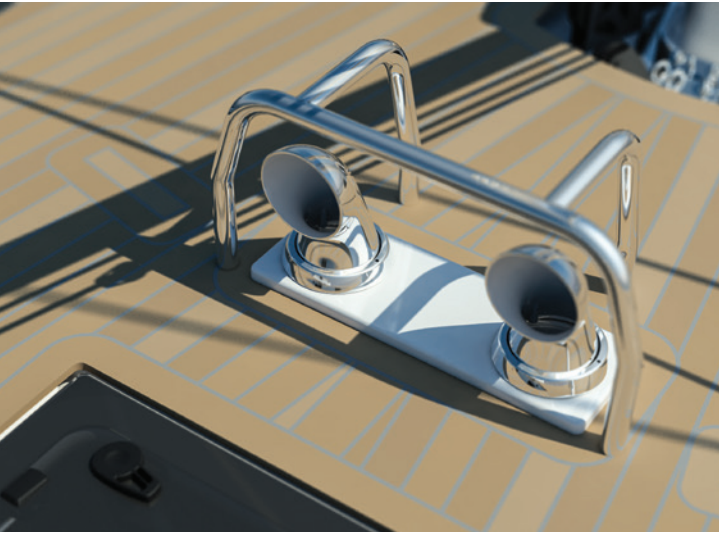
Integrated GRP bow-sprit as standard, hides anchor arm with double roller. Tack point for asymmetric spinnaker as standard, can also be specified with Code-0 tack point.



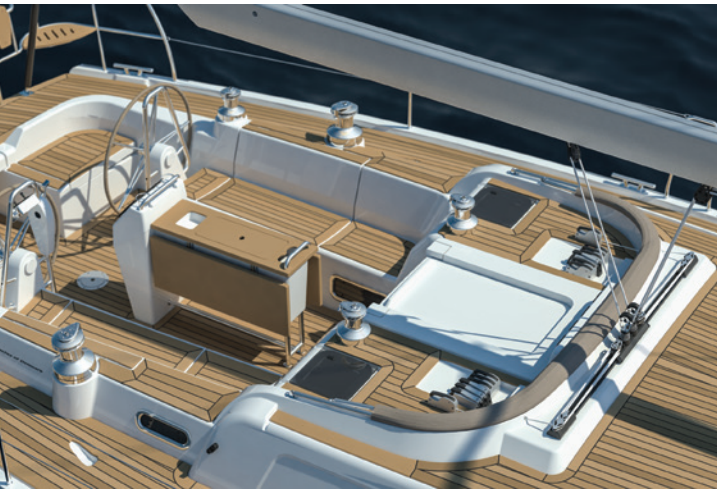
Optional jib self-tacker mounted on coachroof, allows easy short-handed sailing.



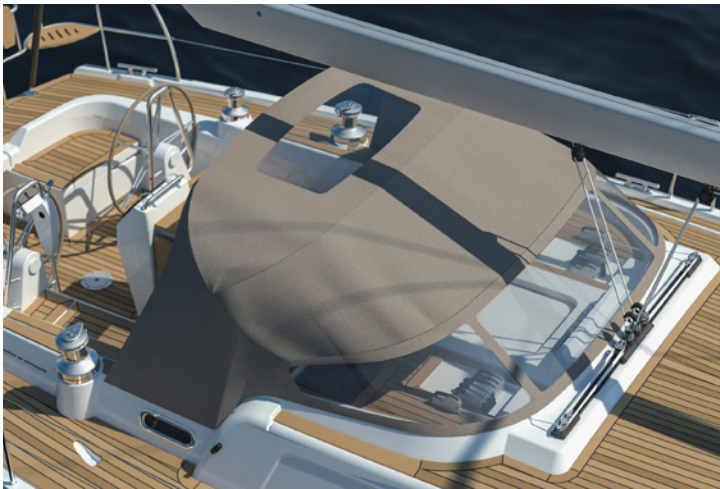
Optional enlarged crash bars are available with integrated engine throttle / thruster controls. Binnacle compass can be added to each pedestal. Shown with optional Teak & Composite wheel.



Stainless steel ventilation dorades are mounted on the coach roof, with stainless steel protection bar, provide excellent ventilation into the accommodation.



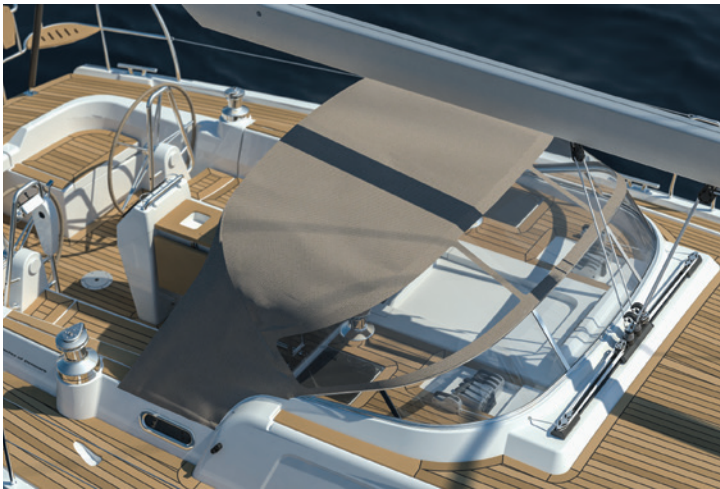
The standard spray hood rests in a "sock" when folded.



The standard spray hood is supported by three stainless steel frames. For canvas colour options, see page 22-23.



Xc 45 comes optional with an aluminium framed windshield with toughened glass.



The optional windshield with the raised spray hood.

HULL STYLE OPTIONS

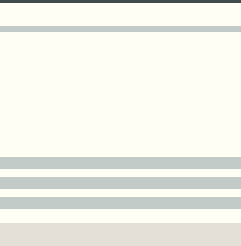


HULL TRIM STRIPES

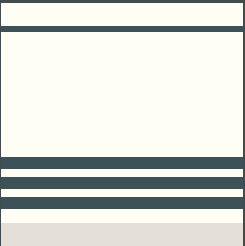
A standard Xc 45 comes in a pure white (RAL9010) gelcoat with pebble grey (RAL 7032) waterlines and sheerline stripe, optional light grey (RAL 7035) or iron grey (RAL 7011) waterlines and sheerline stripes are available.



White hull with
pebble grey stripes



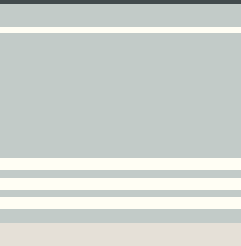
White hull with
light grey stripes



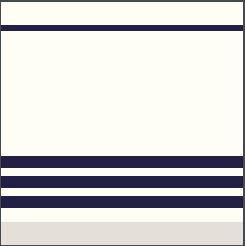
White hull with
iron grey stripes



Pebble Grey hull
with white stripes



Light Grey hull
with white stripes



White hull with
dark blue stripes

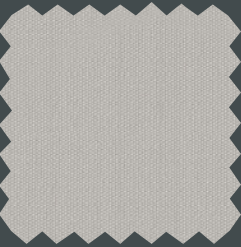


EXTERIOR FABRICS

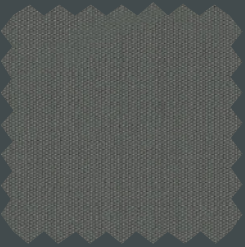
Choose between standard taupe (Swela 37329) or alternatively dark grey (Swela 37365) or silver grey (Swela 37362) for sprayhood, bimini, cockpit tent, cockpit cushions, boom cover, forestay cover, cockpit table and wheel covers. Other colours on request.



Taupe
(Swela 37329)



Silver grey
(Swela 37362)



Dark grey
(Swela 37365)



Captain's Blue
(Swela 37395)

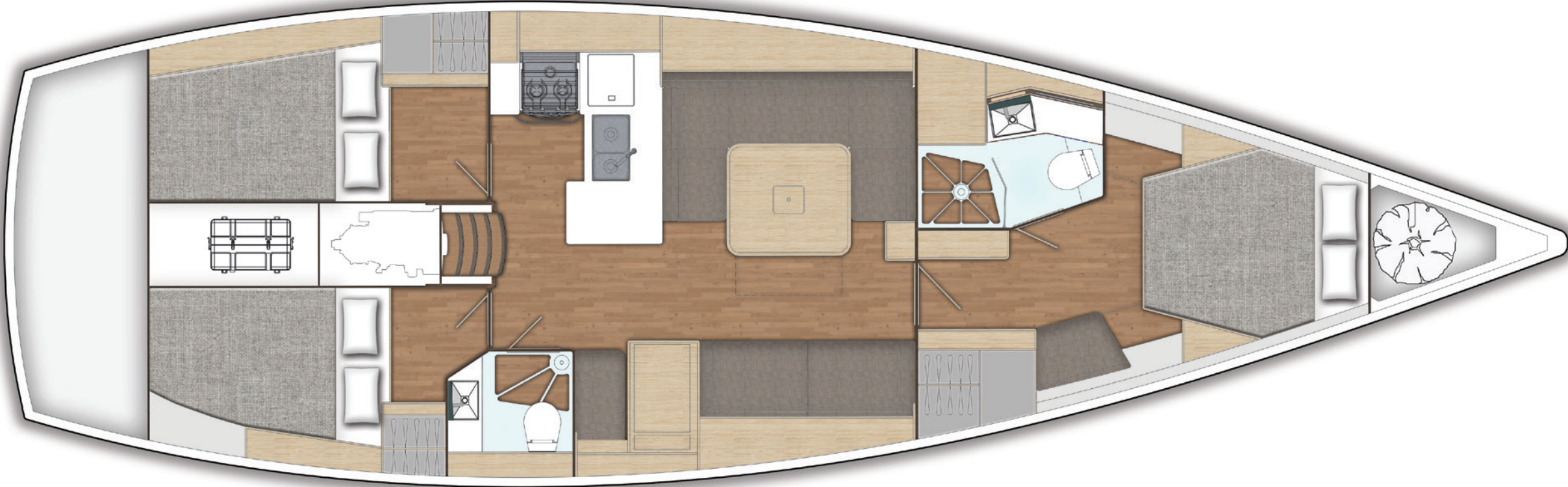


“Quality begins on the inside...
...then works its way out

Bob Moawad – Innovator

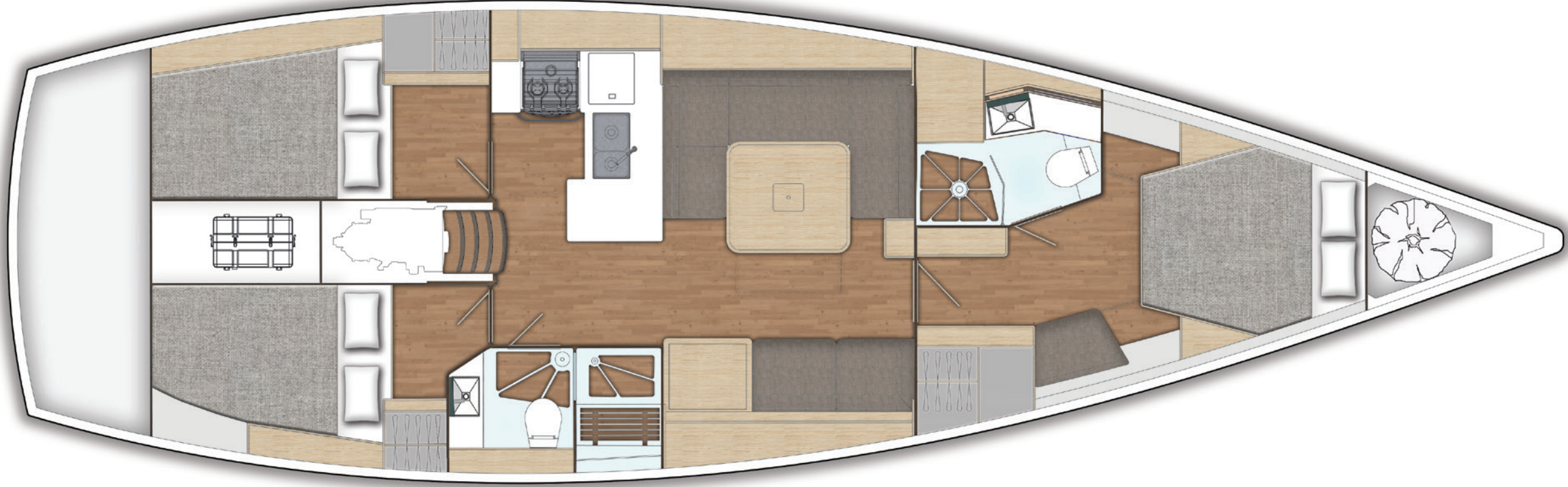
INTERIOR LAYOUTS

Two interior layouts are offered with a variety of surface finishes.
See p36-37 for more details.



STANDARD LAYOUT

- Owner's cabin forward, with owner's head compartment and separate shower.
- Large saloon with seating for 6 around the table, plus additional sofa on starboard side.
- Dedicated forward facing nav station with ample space for charts.
- Spacious galley with 3-burner stove and optional front opening fridge.
- Aft 'wet' head with pull out shower.
- Spacious aft double cabins with storage under berth.



OPTIONAL LAYOUT

- Owner's cabin forward, with owner's head compartment with separate shower.
- Large saloon with seating for 6 around the table.
- Chart table situated between two comfortable chairs in starboard side of the main cabin
- Spacious galley with 3-burner stove and optional front opening fridge.
- Enlarged aft head compartment with dedicated shower.
- Spacious aft double cabins with storage under berth.



SALOON

The spacious saloon is flooded with light from coachroof portlights and deck hatches. The large dining table with integrated wine bottle compartment can comfortably host 6 guests. Seating consists of a spacious U-Sofa on port side and an additional sofa or seats on starboard side, depending on layout.

Above: The standard Xc 45 saloon with optional galley transverse cupboard. The saloon table has a built in wine storage

Right: Wooden grills hide speakers for the optional entertainment systems.





GALLEY

The spacious galley has all the facilities positioned within easy reach and plenty of storage space. A Corian counter-top and tinted splashback create a stylish space. Handrails at the companionway and along the coach roof provide security under way.

Optional extras include: transverse top cupboard, top loaded deep freezer, front opening fridge, Microwave and foot pumped saltwater tap.

Above: Standard features include: Corian worktop with top loaded fridge, toughened glass splash back, a rectangular sink with single lever mixing tap and shelves, drawers and lockers providing storage space for cutlery, crockery and food.

Right: Gimballed oven.





TECHNICAL
INSTALLATIONS

The Xc 45 has a standard AGM battery bank of 260Ah@24V and a separate engine start battery of 70Ah.

The boat is equipped with a 12V DC main circuit breaker panel with resettable fuses and a large 12V electrical distribution panel at the nav. station including 27 independent circuits for lights, pumps, electronics etc.

The 230V el-system consists of a 25m shore power cable, 10A main circuit breaker, 230V distribution panel with circuits for the hot water tank, the standard 24V/40A battery charger and a standard 230V socket.

The boat has a fresh water tank capacity of 590 litres plus 40 litres of hot water heated by 230V shore power or via the engine cooling circuit.

The fuel tank has a capacity of 460 litres. Both tanks levels can be monitored on the el-panel fitted at the nav. station.

The 80hp main engine from Yanmar is situated in the engine room which is insulated with high quality marine insulation to minimize noise.

Above: The dedicated forward nav station with the optional transverse chart plotter box. As standard, a chart plotter can be neatly hidden away in the top cupboard.

Right: Drawers have hidden runners that allow the drawer to be fully pulled out. The drawers feature soft close and self locking catches.





OWNER'S CABIN

Owner's cabin with large double centre berth (200cm x 150cm) with curved laminated battens below the mattress for improved ventilation and comfort. Large under berth drawers. Night tables positioned either side of berth.

Owner's en-suite head, located on port side, with a regular sized manually operated marine toilet, moulded sink with single lever luxury mixer tap, cupboard and mirror. Dedicated shower compartment with acrylic doors and automatic electric sump pump. Space for optional washing machine (see pricelist for details).

Above: Top cupboards and shelves above the berth (port and starboard).

Right: Owner's bathroom. Cupboard can hold a standard sized domestic washer dryer.





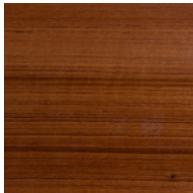
These descriptions, illustrations and dimensions are not contractual binding.

INTERIOR SURFACES

WOOD SURFACE

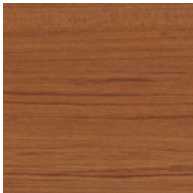


Nordic Oak
(Standard)

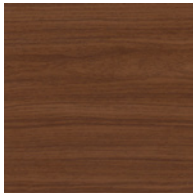


Teak

FLOORBOARDS



Teak without koto
(Standard)



Walnut

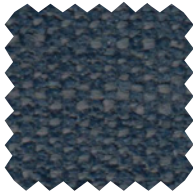
FLECKLESS FABRICS



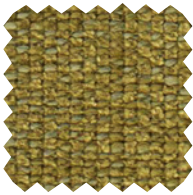
Just Fleckless
01 Nature



Just Fleckless
05 Camel



Just Fleckless
10 Navy



Just Fleckless
403 Bambus



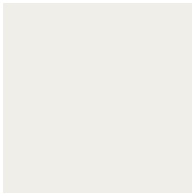
Just Fleckless
710 Moon Grey



Just Fleckless
750 Olive Grey

The material of this upholstery fabric can be easily cleaned with a cotton cloth and distilled water, 85% Polyester, 15% Viscose. Weight: 710 g +/- 5%.

GALLEY WORK TOPS



Camoan White
Corian
(Standard)



Black Quartz
Corian

MICRO FIBRE FABRICS



Alsace Blue



Alsace Ivory

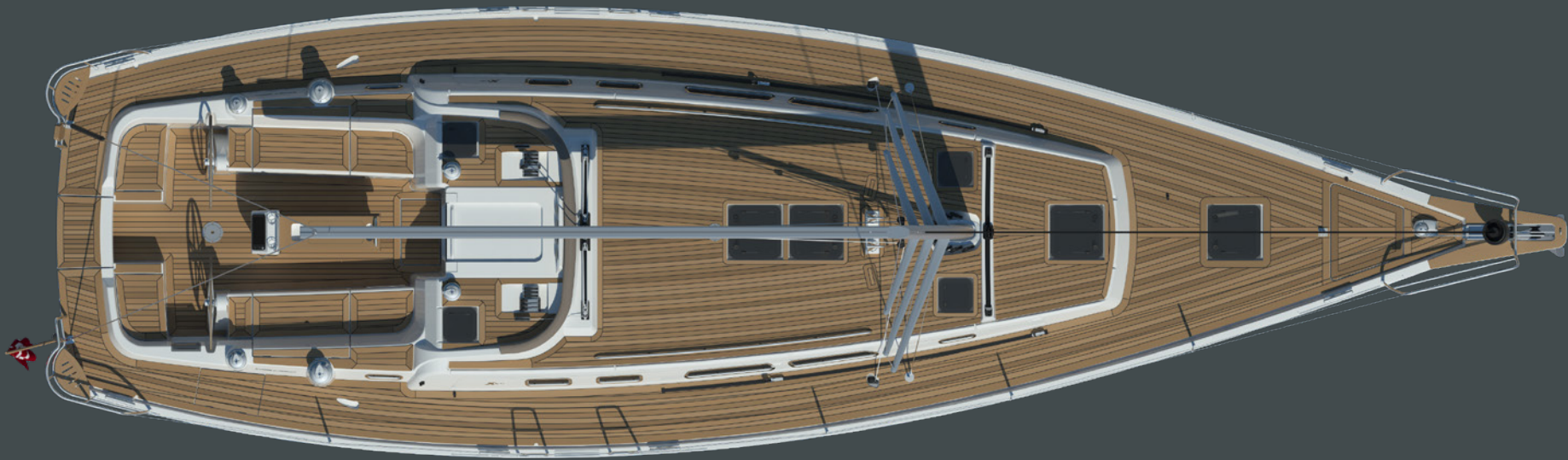


Alsace Sand



Nubilux 709
Argent

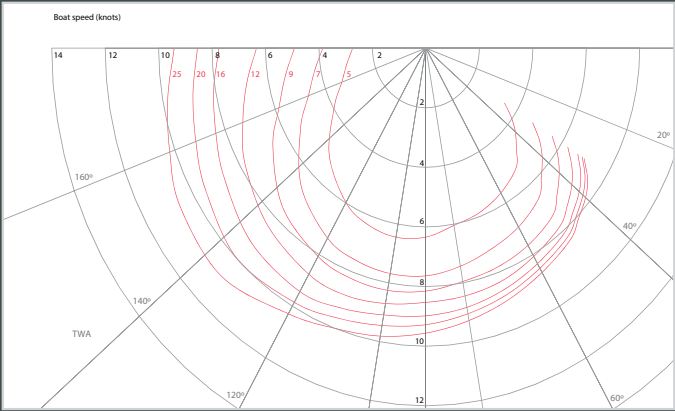
Alsace and Nubilux; Extremely easily cleaned.
100% Polyester Micro fibre fabrics has knitted back and velor surface. Breathable, durable and abrasion resistant.



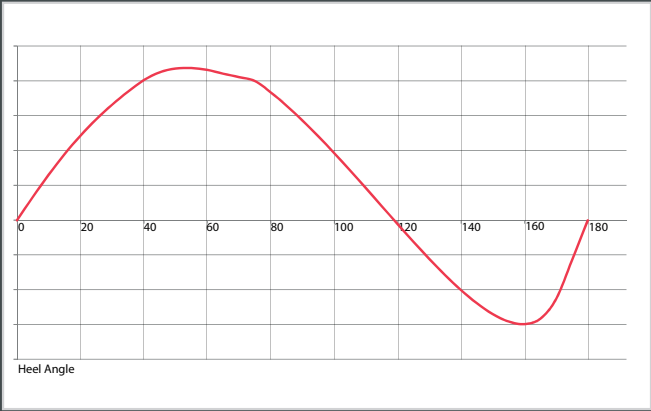
SAIL AREAS		
Mainsail	61.30 m ²	660 ft ²
Self tacking jib (94%)	44.1 m ²	475 ft ²
Inner forestay HW jib	31.8 m ²	342 ft ²
Genoa (108%)	50.7 m ²	545 ft ²
Genoa (140%)	65.3 m ²	702 ft ²
Asymmetric spinnaker	180 m ²	1,938 ft ²

DIMENSIONS		
Hull length	13.86 m	45.47 ft
Waterline length	12.76 m	41.80 ft
Beam	4.32 m	14.17 ft
Draft (standard)	2.20 m	7.21 ft
Draft (shallow)	1.80 m	5.90 ft
Ballast (standard)	5,965 kg	13,150 lbs
Displacement light	13,220 kg	29,145 lbs

ENGINE / TANKS		
Engine diesel	59.6 kW	80 HP
Fuel capacity	440 Ltr	116 (US) gal
Water capacity	615 Ltr	162 (US) gal



Polar Diagram for Xc 45 with standard keel and fully loaded for cruising



Stability Curve for Xc 45 with standard keel and fully loaded for cruising



X-C 45