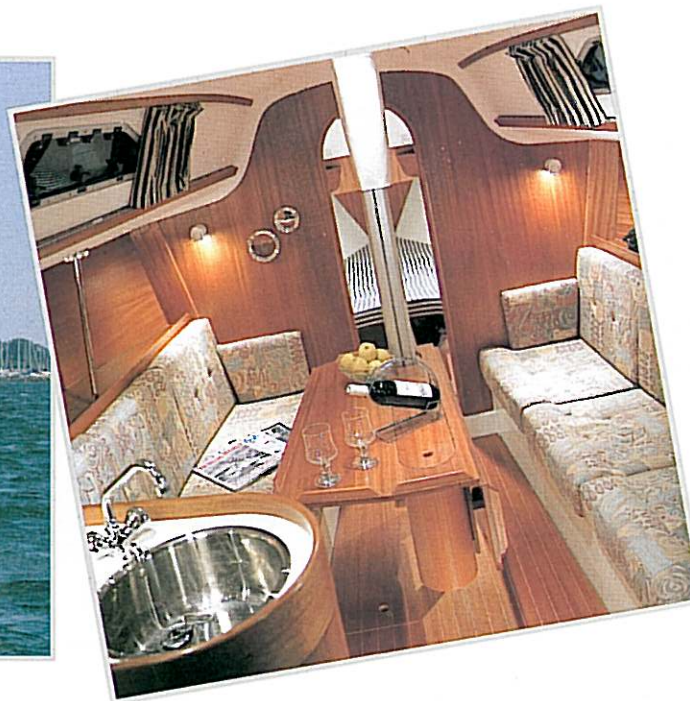


THE ULTIMATE 30' CRUISER/RACER  
FROM X-YACHTS OF DENMARK



# X-302

DESIGNED BY NIELS JEPPESEN

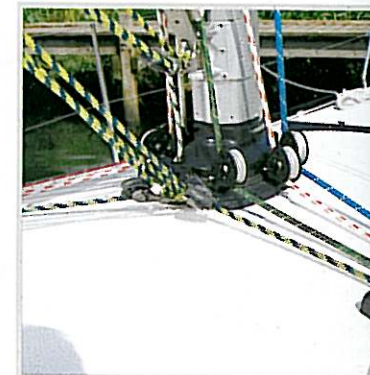






## VER THE

X-YACHTS have had many years of experience in building boats in the 30's size range. The first generation 30 footer was the X-95. Launched in 1982 the X-95 was developed as a production IOR 1/2 tonner. She had an excellent sailing performance for her day, yet offered a practical interior in



Some items such as anchor roller, furling headstay, teak in cockpit and instruments are optional.



## FEW 30 FOOTERS OFFER SAME SPACE BELOW DECKS

relation to her more racing oriented counterparts. In 1987 X-Yachts introduced the X-312 which represented a move away from the restricted IOR hull forms as the early eighties. The X-312 offered a longer waterline length together with a more moderate beam, and was the first of the "easily driven"

performance cruisers to be produced by X-YACHT. Seven years on, and the X-302 is launched to replace the X-312. The all new X-302 incorporates all the latest X-Yachts' features, and represents one of the most ambitious development projects in this size range to date.

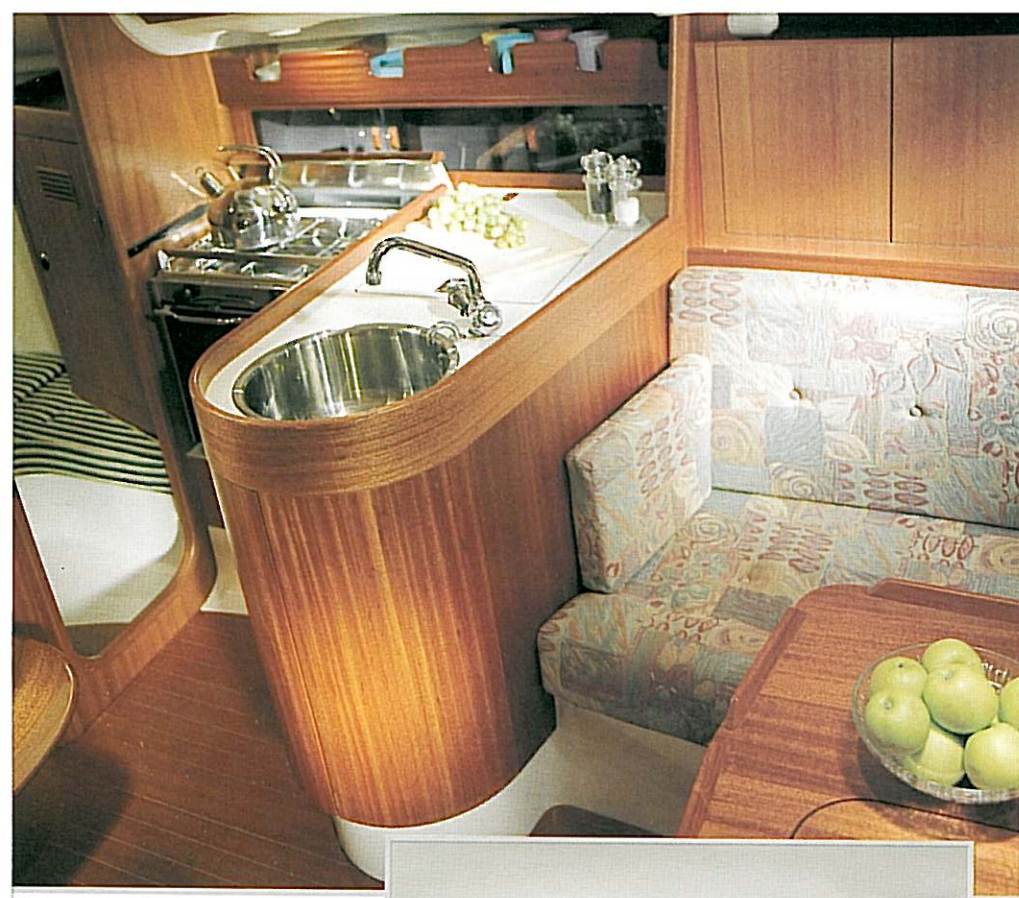






## BELOW DECKS

Wherever you look you will find that there is ample space for storage of personal gear and equipment. Deep shelves below the deck and hanging lockers in the forepeak and aft cabin, a practical "wet locker" for oilskins and boots in the head compartment, plenty of locker space in the roomy gallery, good provision for installation of electronics and storage of books etc. at the chart table, and an enormous cockpit locker for the inflatable dinghy, fenders, mooring lines etc. The exterior has been designed with the cruising family in mind. Top grade Khaya mahogany has been used in conjunction with extensive use of laminated surrounds to produce an elegant, homely feel below decks. The absence of sharp corners in the interior is not only pleasing the eye, but also adds greatly to the safety and comfort of the yacht when at sea.



Main cabin's  
cabinet sections are  
optional.



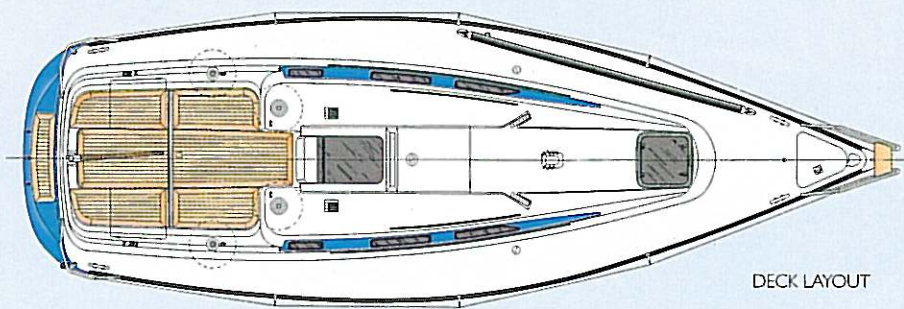




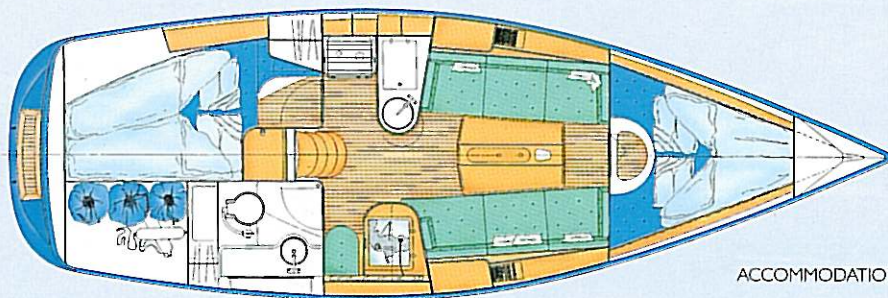


## THE KEY FEATURES

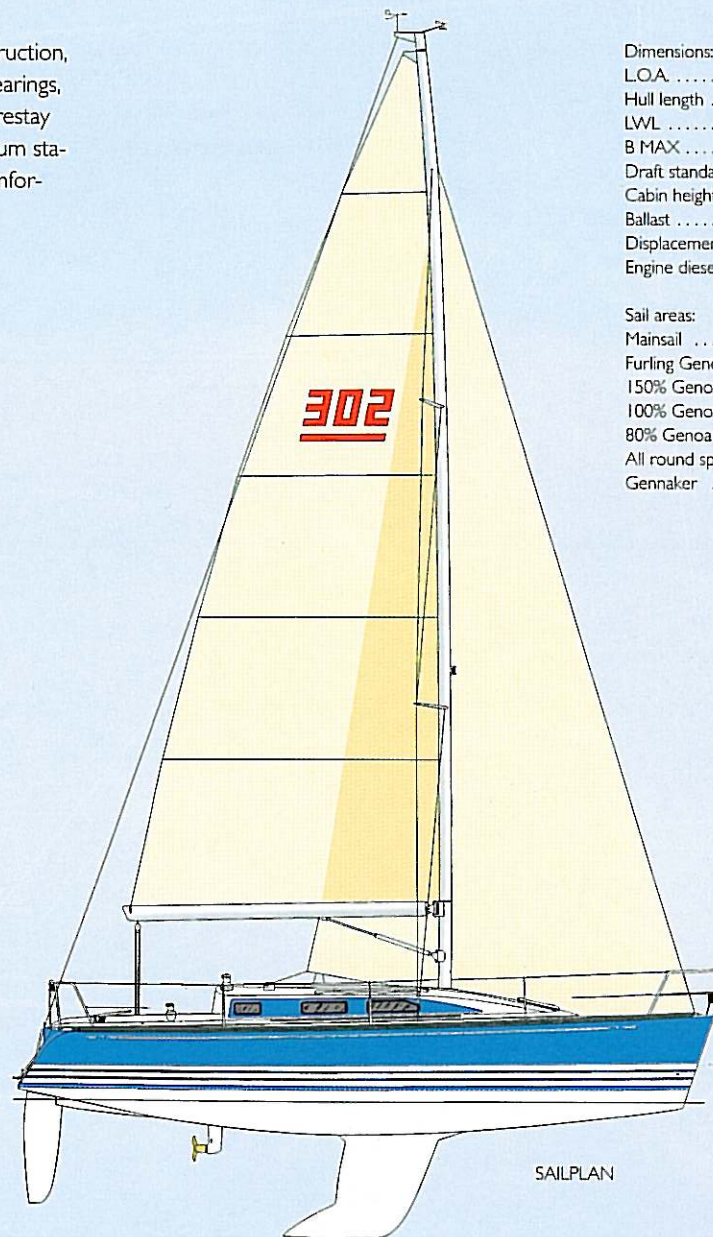
High help to make the X-302 a truly outstanding 30 footer include: Sandwich hull and deck construction, steel bottom frame for keel and rig loads, tapered rudder shaft and low friction needle rudder bearings, powerful engine with S-drive installation, discontinuous rod rigging, extra stiff mast section and forestay furling drum (optional) installed below decks. Maximum sailing waterline length combined with maximum stability from the composite lead/iron bulb keel and a very clean undistorted hull form. An extremely comfortable, high volume interior finished with a GRP head liner and top quality timber work throughout.



DECK LAYOUT



ACCOMMODATION



SAILPLAN

### Dimensions:

L.O.A. ....	9.350 m	-	30.6 ft.
Hull length ....	9.100 m	-	29.8 ft.
LWL ....	8.050 m	-	26.4 ft.
B MAX ....	3.000 m	-	9.8 ft.
Draft standard ....	1.700 m	-	5.6 ft.
Cabin height ....	1.850 m	-	6.9 ft.
Ballast ....	1,500 kg	-	3,303 lbs.
Displacement ....	3,600 kg	-	7,929 lbs.
Engine diesel ....	6.7 kW	-	9 HP

### Sail areas:

Mainsail ....	26.0 m <sup>2</sup>	-	279.9 ft. <sup>2</sup>
Furling Genoa ....	25.5 m <sup>2</sup>	-	274.5 ft. <sup>2</sup>
150% Genoa I ....	26.7 m <sup>2</sup>	-	287.4 ft. <sup>2</sup>
100% Genoa III H.A. ....	17.8 m <sup>2</sup>	-	191.6 ft. <sup>2</sup>
80% Genoa IV VVJ. ....	14.2 m <sup>2</sup>	-	152.8 ft. <sup>2</sup>
All round spinnaker ....	60.0 m <sup>2</sup>	-	645.8 ft. <sup>2</sup>
Gennaker ....	58.1 m <sup>2</sup>	-	625.4 ft. <sup>2</sup>









## NIELS JEPPESEN TALKS ABOUT THE X-302

Being a family man myself I set out to design a 30 footer that would accommodate my own needs. To provide a safe yet fun yacht that could take two adults and four children sailing for a couple of weeks in comfort and at the same time have such a sailing performance that I could race her successfully at small or even big regattas. Such a boat should have plenty of storage space for all the essentials that

accompany a family on holiday (toys, clothes, books etc.) It must have good ventilation and comfortable sleeping and cooking arrangements.

However such a boat must not suffer from a poor sailing performance, and amongst other things must be able to carry a very tight forestay for good upwind performance. Above all, this 30 footer was to be a true X-Yacht, where quality and

finish should be outstanding, and where sailing performance should be the very best, bringing the crew maximum enjoyment. Not only when racing in a regatta, but also when simply beating their friends' 33 footer back to the marina! For the family cruiser she offers a safe, comfortable "home from home", and for the racing enthusiast it will be a delight to sail such a fast and stiff yacht.



X-Yacht head office in Haderslev Harbour.. Centre of new model development and quality control.

# X-Yachts

WORLD CLASS SAILING YACHTS

Fjordagervej 21 · DK-6100 Haderslev · Denmark  
Tel. int. + 45 74 52 10 22 · Fax. +45 74 53 03 97  
e-mail: [info@x-yachts.com](mailto:info@x-yachts.com) - [www.x-yachts.com](http://www.x-yachts.com)

This brochure is not contractual.  
All descriptions, illustrations, etc.  
are only for indication.  
X-YACHTS reserves the right to  
modify or improve our  
specifications without notice.

Haderslev Skiftsbogrykter 8498

November 2000

