



dynammeeting

dynammeeting

l'energia che ti serve.

BIX

Audi

A TRUE SEAGOING YACHT

The X-332 embodies all the experience and know-how gained by X-YACHTS in creating a true seagoing, comfortable yacht, a yacht that combines high level technology with outstanding choice of lines, materials and equipment.

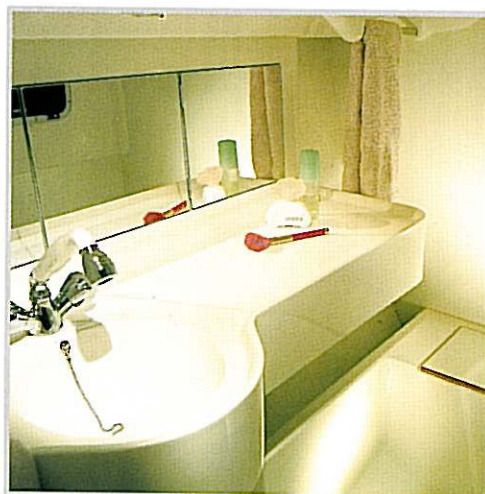
On deck no effort has been spared to ensure that the X-332 is a real joy to sail. Finger tip response on the helm is ensured thanks to the low friction rudder bearings (double needles). Most sailing tasks can be performed from the comfortable and secure cockpit thanks to details such as the banks of rope clutches and standard under deck roller furling for the headsail. The keel stepped mast is supported by discontinuous rod rigging for optimum strength, and fine tuning is made easy with the provision of a 1:16 purchase backstay adjuster. All halyard and control lines are of top quality, low stretch Marlow Spectra, and the Lewmar, Harken and Frederiksen deck hardware have been chosen to provide many years of trouble free performance.





THE INTERIOR

The interior of the X-332 is a showpiece of Danish craftsmanship. X-YACHTS has employed the most advanced carpentry techniques combined with top quality timbers and veneers to produce a harmonious blend of old and new. The fibreglass moulded headlines are both highly durable and pleasing to the eye, giving the X-332 a very light and airy feel. Subtle halogen lightning and ample deck hatches ensure that the cabine is a comfortable »home from home«.











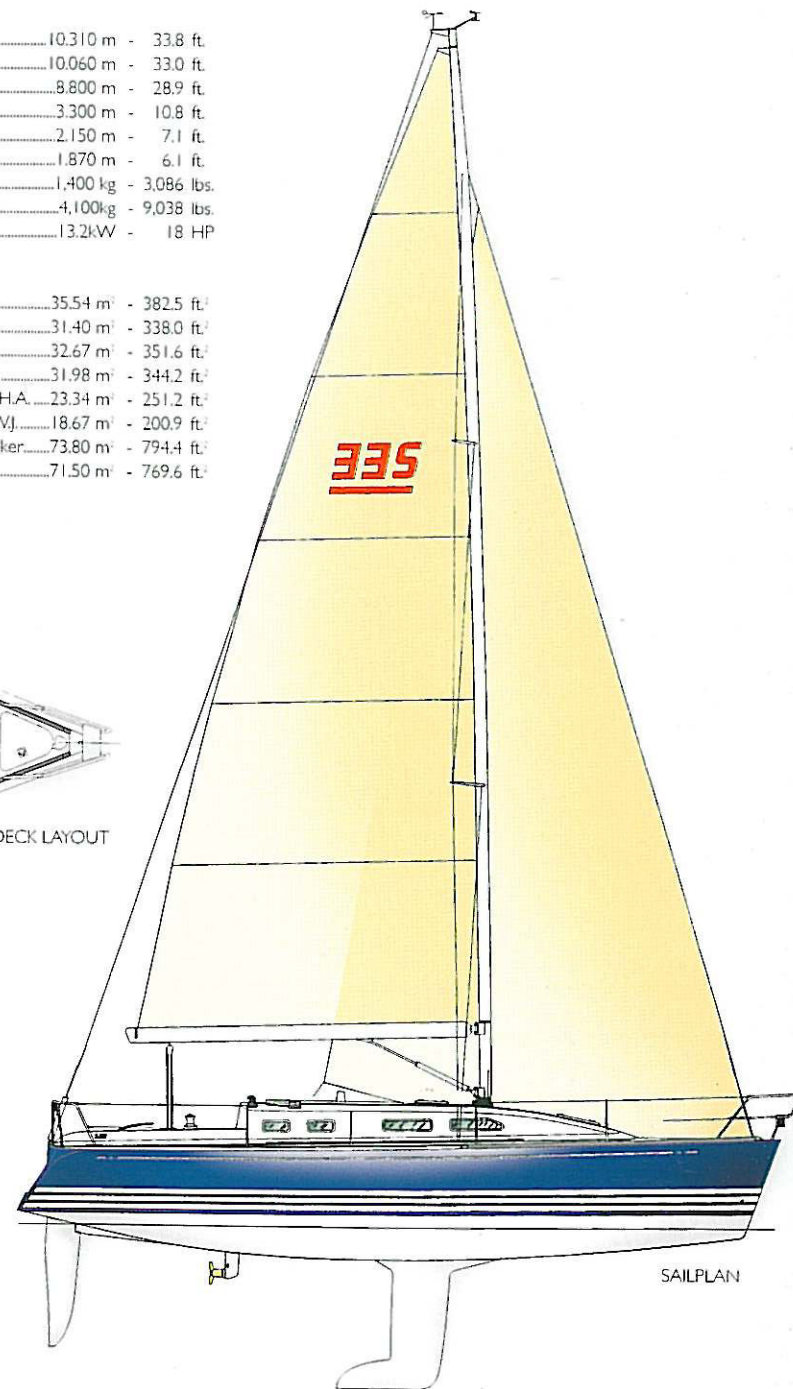
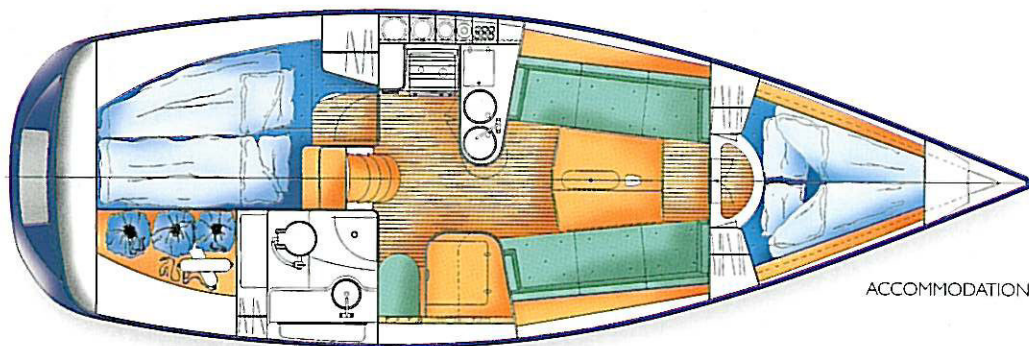
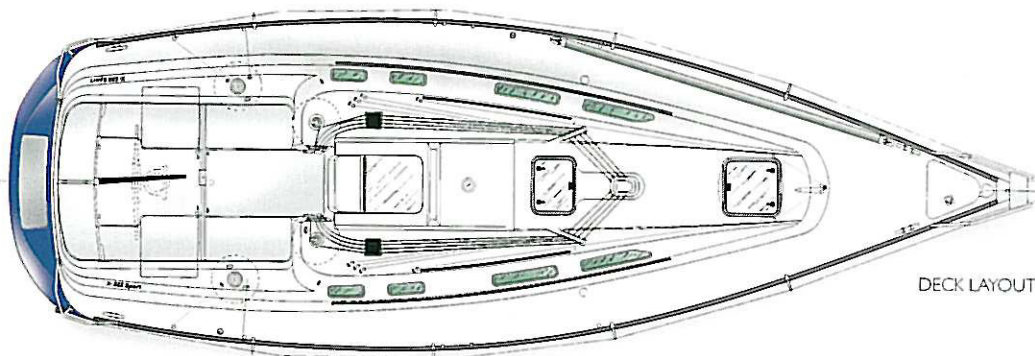
THE KEY FEATURES

Typical X-YACHTS features such as the foam cored hull, steel bottom frame, tapered aluminium rudder stock with low friction needle bearings, excellent weight concentration around the middle of the yacht, a strong stiff mast section, discontinuous rod rigging and composite interior bulkheads all work together to produce an outstanding sailing performance at absolutely no cost to the creature comforts on board.

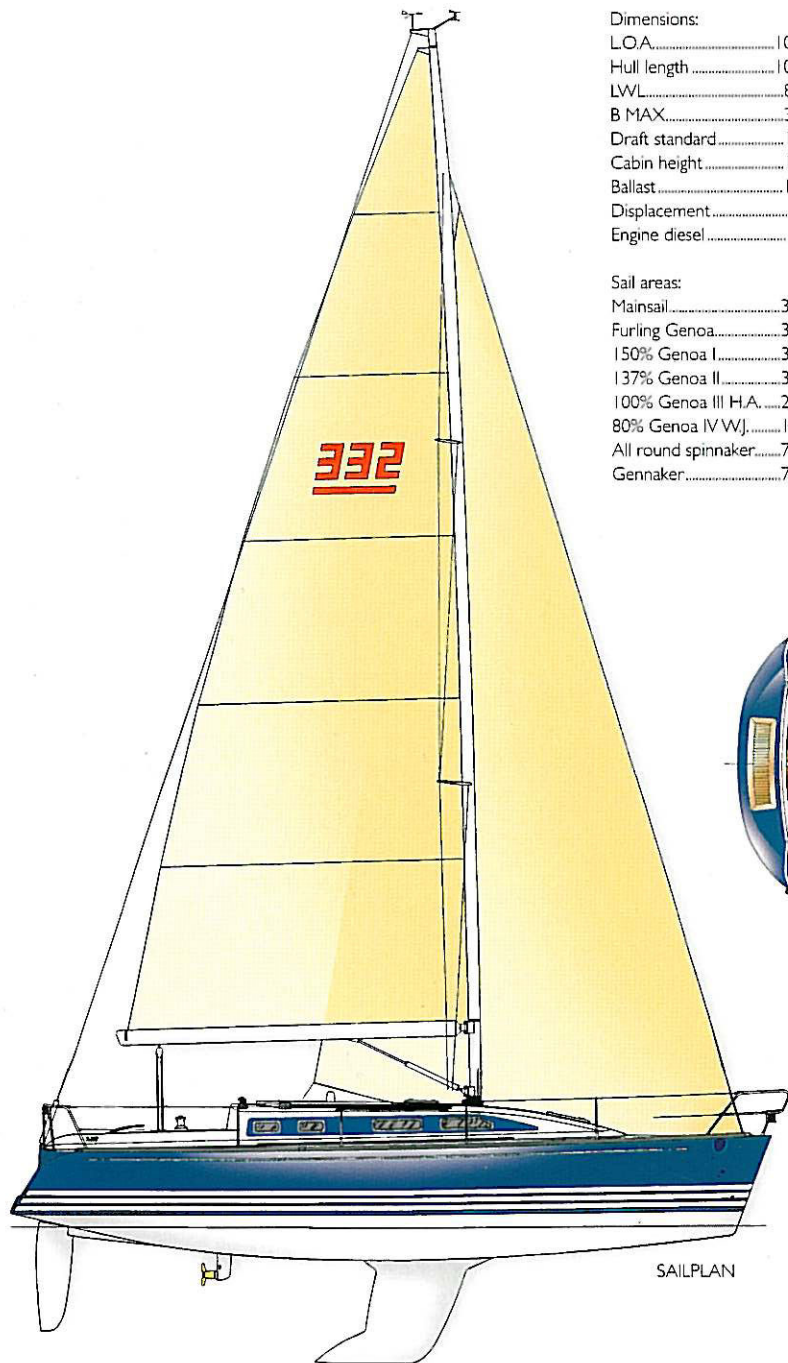
The X-332 is built in accordance with the European CE-Certification and meets the requirements of the CE-directive 94/25/CE for recreational crafts.

Dimensions:		
LOA.....	10.310 m	- 33.8 ft.
Hull length.....	10.060 m	- 33.0 ft.
LWL.....	8.800 m	- 28.9 ft.
B MAX.....	3.300 m	- 10.8 ft.
Draft standard.....	2.150 m	- 7.1 ft.
Cabin height.....	1.870 m	- 6.1 ft.
Ballast.....	1.400 kg	- 3.086 lbs.
Displacement.....	4.100 kg	- 9.038 lbs.
Engine diesel.....	13.2kW	- 18 HP

Sail areas:		
Mainsail.....	35.54 m ²	- 382.5 ft ²
Furling Genoa.....	31.40 m ²	- 338.0 ft ²
150% Genoa I.....	32.67 m ²	- 351.6 ft ²
137% Genoa II.....	31.98 m ²	- 344.2 ft ²
100% Genoa III H.A.....	23.34 m ²	- 251.2 ft ²
80% Genoa IV VVJ.....	18.67 m ²	- 200.9 ft ²
All round spinnaker.....	73.80 m ²	- 794.4 ft ²
Gennaker.....	71.50 m ²	- 769.6 ft ²



X-332 SPORT



SAILPLAN

Dimensions:

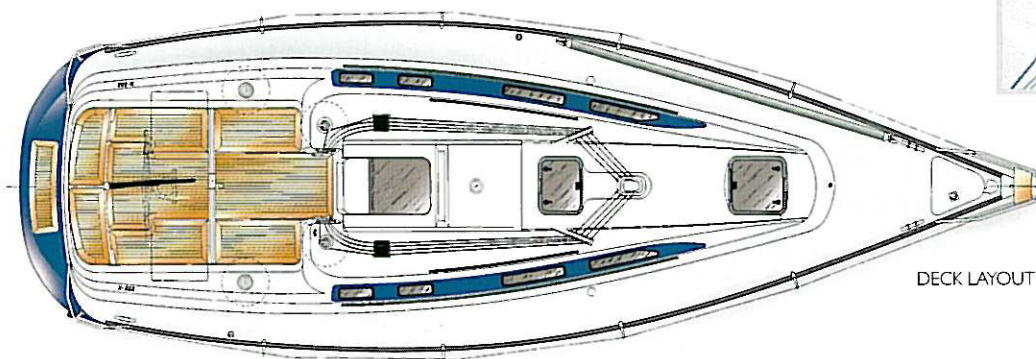
LOA.....	10.310 m	-	33.8 ft.
Hull length.....	10.060 m	-	33.0 ft.
LWL.....	8.800 m	-	28.9 ft.
B MAX.....	3.300 m	-	10.8 ft.
Draft standard.....	1.800 m	-	5.9 ft.
Cabin height.....	1.870 m	-	6.1 ft.
Ballast.....	1.800 kg	-	3,968 lbs.
Displacement.....	4,350 kg	-	9,590 lbs.
Engine diesel.....	13.2kW	-	18 HP

Sail areas:

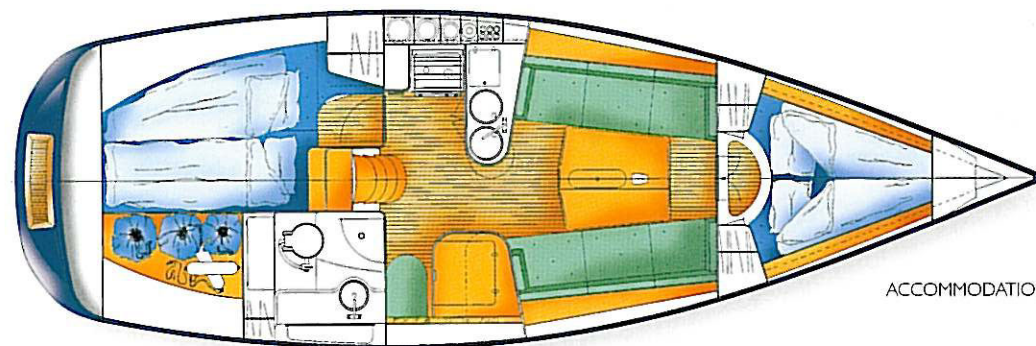
Mainsail.....	35.54 m ²	-	382.5 ft. ²
Furling Genoa I.....	31.40 m ²	-	338.0 ft. ²
150% Genoa I.....	32.67 m ²	-	351.6 ft. ²
137% Genoa II.....	31.98 m ²	-	344.2 ft. ²
100% Genoa III H.A.....	23.34 m ²	-	251.2 ft. ²
80% Genoa IV VVJ.....	18.67 m ²	-	200.9 ft. ²
All round spinnaker.....	73.80 m ²	-	794.4 ft. ²
Gennaker.....	71.50 m ²	-	769.6 ft. ²



Some items such as anchor roller, furling headstay, teak in cockpit and instruments are optional.



DECK LAYOUT



ACCOMMODATION

X-332

The X-332 Sport was launched in 2002 with a new designed keel and rudder and the deck gear especially designed for easy racing. The X-332 Sport has adopted some of her new looks from the IMX range with white antislip area and white cabin sides, white painted frames on all port- and skylights and with green and white plexiglass on port- and skylights and sliding hatch. The sport version has GF ball bearing blocks throughout, upgraded winches, perm backstay is led to the mainsail trimmer's position each side and a slimline racing folding propeller is adding to the Sport feature.





NIELS JEPPESEN TALKS ABOUT X-332

There are no words to clearly describe the sheer pleasure to be gained from sailing a perfectly balanced yacht upwind, enjoying the harmony of the helm, sails, hull, and keel. The experienced racing sailor will feel instantly at home on the helm of the X-332 Sport, and for the less expert yachtsman the X-332 will surely open up a new world of sailing pleasure. Performance with control, quality, strength, and style are features that make the X-332 a quite outstanding yacht.



X-Yachts™
WORLD CLASS SAILING YACHTS

Fjordagervej 21 · DK-6100 Haderslev · Denmark
Tel. int. + 45 74 52 10 22 · Fax. +45 74 53 03 97
e-mail: info@x-yachts.com - www.x-yachts.com

This brochure is not contractual.
All descriptions, illustrations, etc.
are only for indication.
X-YACHTS reserves the right to
modify or improve our
specifications without notice.

Haderslev Stiftsbogtrykkeri

September 2003 · 11966